

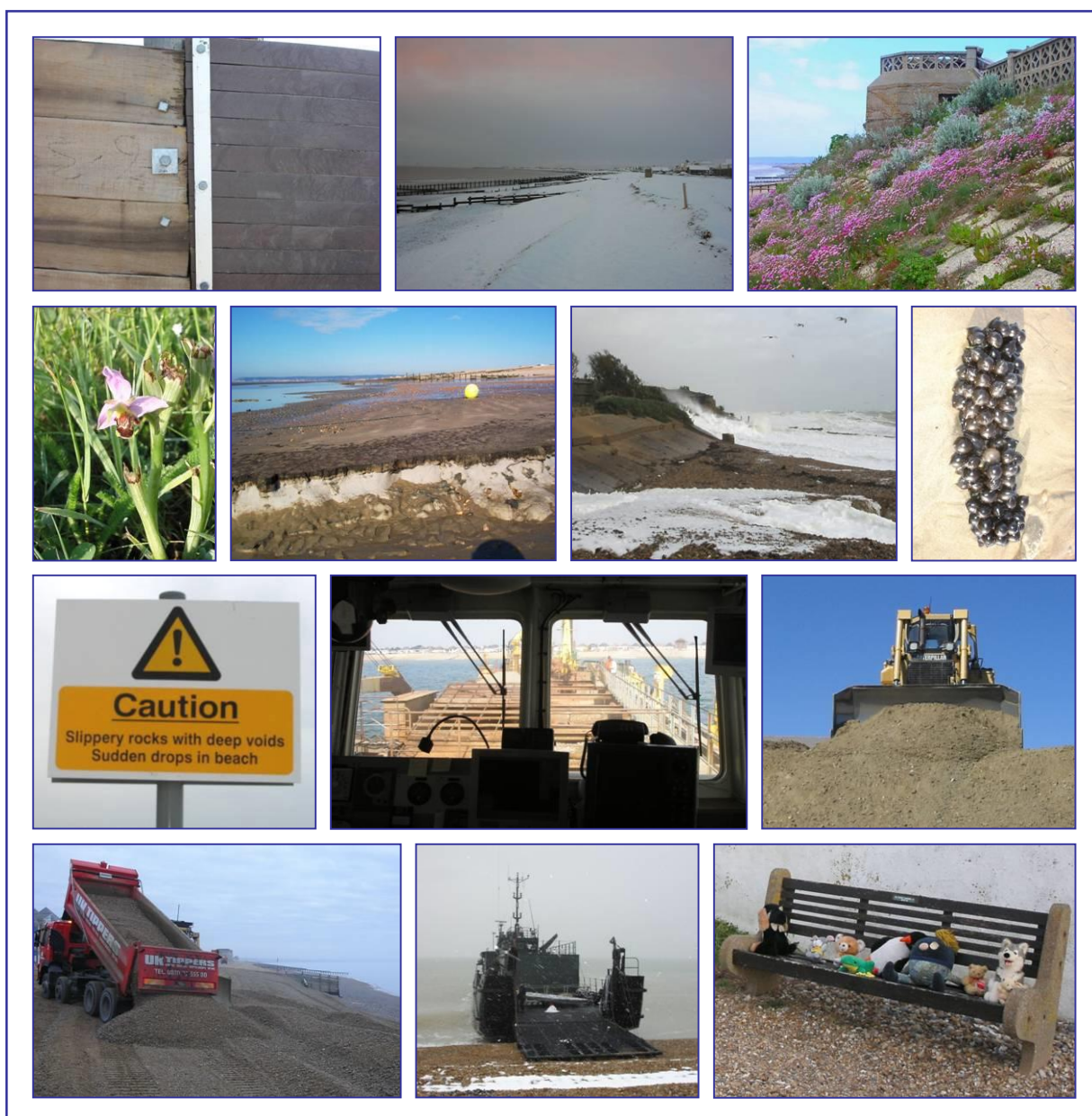


PEVENSEY BAY SEA DEFENCES PPP

ANNUAL REPORT

To 30th June 2013

Year 13





Summary

Background on the Pevensey Sea Defence Scheme

Pevensey Bay Sea Defences extend for 9km along the Sussex coastline from Sovereign Harbour, Eastbourne in the west through to Cooden, Bexhill-on-Sea in the east. The existing frontage consists primarily of a shingle beach and bank supported by an extensive timber groyne field in varying states of repair. The defences protect large areas of low-lying land from flooding and many beach crest top properties from erosion.

Management of the Pevensey sea defences has historically been carried out by the Environment Agency Southern Region and its predecessor organisations. Under the terms of the Pevensey Bay Sea Defence Public Private Partnership (PPP) responsibility for management has passed to a private consortium called Pevensey Coastal Defence Limited (PCDL) that came into existence specifically for the Pevensey Bay Sea Defence Scheme.

The management contract is for twenty-five years. Over this period PCDL will be required to ensure that certain defence standards are maintained along the entire frontage. PCDL intend to implement capital works and undertake maintenance and emergency response works. As partners, the Environment Agency will continue to monitor the sea defences to ensure that existing and future improved levels of protection are maintained.

Objectives

This report is the culmination of the tenth year of that contract. There are three important objectives the annual report intends to achieve:

- to fully describe all work undertaken in fulfilling the contract requirements.
- to act as repository and future reference for important data gathered during the year.
- to identify any areas where existing monitoring, measurement, forecasting or other procedures can be improved to the benefit of the contract and sea defences.

Earlier reports have made comment about weather forecasting data, Joint Return Probability calculations for storm events, flood warning procedures, ABMS Profile locations and several other issues. This and succeeding reports will continue to update any actions taken in resolving or improving the effectiveness of these topics.

Due to the length of the contract many methodologies employed for prediction, monitoring and maintenance purposes will undoubtedly change. It is important that the thread of development for any such changes is kept for future reference.

Whilst every effort has been made to include all important elements within this report, being the first contract of its kind, it is likely that the format of future versions will vary according to conditions encountered.



Contents

Title Page	i
Summary	ii
Contents	iii
1 Works Undertaken	1-1
1.1 Maintenance – Annual Beach Replenishment: 2012	1-1
1.1.1 Phase 1 – September 2012	1-1
1.1.2 Phase 2 – October 2012	1-4
1.1.3 Phase 3 – December 2012	1-5
1.1.4 Phase 4 – January 2013	1-6
1.1.5 Grading	1-7
1.2 Maintenance – Groyne Works: September 2012	1-7
1.3 Maintenance – Recycling: October 2012	1-8
1.4 Maintenance – Recycling: November 2012	1-10
1.5 Maintenance – Harbour Bypassing: November 2012	1-13
1.6 Emergency Works – Recycling & Reprofiling: December 2013	1-17
1.7 Maintenance – Recycling: January 2013	1-20
1.8 Maintenance – Recycling: February 2013	1-21
1.9 Maintenance – Groyne Works: February 2013	1-23
1.10 Maintenance – Recycling: April 2013	1-23
1.11 Maintenance – Sovereign Harbour Dredging	1-25
1.12 Maintenance – Reprofiling	
1.13 Health & Safety	1-26
1.13.1 Health & Safety Plan – Annual Review: 2012-13	1-26
1.14 Environment	1-26
1.14.1 Pevensey Outfalls	1-26
1.14.2 Fisherman’s Village	1-28
1.15 Sustainability	1-29
1.16 Carbon Emissions	1-30
2 Consultation, Meetings & Liaison	2-1
2.1 Environment Agency Liaison	2-1
2.1.1 Environment Agency – Project Managers	2-1
2.1.2 Environment Agency – Flood & Coastal Risk Management (FCRM)	2-1
2.1.3 Environment Agency – Flood Incident Management (FIM)	2-5
2.1.4 Environment Agency – Flood Forecasting Centre	2-6
2.1.5 Environment Agency – South East Beach Management Plan project	2-7
2.1.6 Environment Agency – Pevensey Outfalls Project	2-7
2.1.7 Environment Agency – Development & Flood Risk	2-7
2.1.8 Environment Agency – Hydrometry & Telemetry (H&T)	2-8
2.1.9 Environment Agency – Defra	2-9
2.1.10 Environment Agency – East Sussex Modelling Study	2-9
2.1.11 Environment Agency – South West	2-9
2.1.12 Environment Agency – National Operations	2-9
2.1.13 Environment Agency – Communications	2-10
2.1.14 Environment Agency – Development & Sustainability Team	2-10



2.2	Local Authorities & Councils	2-11
2.2.1	East Sussex County Council (ESCC)	2-11
2.2.2	Wealden District Council (WDC)	2-12
2.2.3	Rother District Council (RDC)	2-12
2.2.4	Pevensey Parish Council (PPC)	2-12
2.3	Defra, Hastings & Marine Management Organisation (MMO)	2-13
2.3.1	Fisheries Liaison	2-13
2.3.2	FEPA License	2-13
2.4	Other Local Groups & Landowners	2-14
2.4.1	The Crown Estate	2-14
2.4.2	Sovereign Harbour Residents Association (SHRA)	2-17
2.4.3	Sovereign Harbour – Premier Marinas	2-17
2.4.4	Sovereign Harbour – Carillion	2-21
2.4.5	La Nautica Marina	2-21
2.4.6	Sovereign Harbour Trust (SHT)	2-21
2.5	Other Organisations	2-21
2.5.1	Channel Coastal Observatory (CCO)	2-21
2.5.2	Considerate Constructors Scheme (CCS)	2-22
2.5.3	Brighton University	2-22
2.5.4	Sussex University	2-22
2.5.5	Middlesex University	2-23
2.5.6	Michael Smith, University of Portsmouth	2-23
2.5.7	iCOASST	2-24
2.5.8	Southern Water (SWA)	2-24
2.5.9	Petr Witz, Charles University, Prague	2-25
2.5.10	Network Rail	2-25
2.6	Presentations, Papers & Other Publications	2-26
2.6.1	Battle Abbey School	2-26
2.6.2	Elizabeth Garrett Anderson School, Islington	2-26
2.6.3	University College London (UCL)	2-26
2.6.4	Farlington School, Horsham	2-26
2.6.5	Mount Carmel School, Islington	2-26
2.6.6	Sussex University	2-26
2.6.7	Our Lady's School, Abingdon	2-27
2.7	Pevensey & Project Media Contact	2-27
2.7.1	Annual Public Forum	2-27
2.7.2	Parish Pump Magazine	2-27
3	Description of Storm Events and their Effect on Defences	3-1
3.1	Gales & Other Warnings	3-1
3.2	Weather Event Calculations	3-2
3.2.1	Weather Event Analysis	3-3
3.3	Weather Events	3-7
3.3.1	October 2011	3-7
3.3.2	December 2011	3-14
3.3.3	January 2013	3-25
3.3.4	February 2013	3-28
3.3.5	March 2013	3-30



4	Behaviour of the Defences	4-1
4.1	ABMS Profile 569 to 574 – Sector 1: Sovereign Harbour	4-1
4.1.1	Revetment & Scour Hole	4-1
4.1.2	Martello tower to 'White Horses'	4-2
4.2	ABMS Profiles 575 & 576 – Sector 2: 'White Horses'	4-3
4.3	ABMS Profiles 577 to 589 – Sector 3: Pevensey Bay West	4-4
4.4	ABMS Profiles 590 to 595 – Sector 4: Pevensey Bay East	4-5
4.5	ABMS Profiles 596 and 597 – Sector 5: Beachlands	4-6
4.6	ABMS Profiles 598 to 600 – Sector 6: Camping & Caravan Club	4-7
4.7	ABMS Profiles 601 and 602 – Sector 7: Normans Bay West	4-8
4.8	ABMS Profiles 603 and 604 – Sector 8: Normans Bay Concrete Wall	4-10
4.9	ABMS Profiles 605 to 607 – Sector 9: Normans Bay East	4-11
4.10	ABMS Profiles 608 to 616 – Sector 10: Herbrand Walk	4-12
4.10.1	ABMS Profiles 608 to 610	4-12
4.10.2	ABMS Profiles 611 to 613	4-13
4.10.3	ABMS Profiles 614 to 616	4-14
4.11	ABMS Profiles 617 to 621 – Sector 11: Cooden	4-15
4.12	Bexhill Frontage	4-16
4.13	Conclusion	4-16
5	An Assessment of Littoral Drift	5-1
5.1	Sovereign Harbour	5-2
5.2	'White Horses' to 'The Anchorage'	5-3
5.3	Pevensey Bay Village to Beachlands	5-5
5.4	Beachlands to Normans Bay Outfall	5-7
5.5	Herbrand Walk and Cooden Beach	5-8
5.6	Conclusion	5-10
6	Survey, Measurement & Monitoring	6-1
6.1	Ground Control	6-1
6.2	GPS Surveys – ABMS Profiles	6-1
6.3	ABMS Data	6-3
6.4	GPS Surveys – Quad Bike Survey	6-4
6.5	Monitoring – Recharge Mound	6-5
6.6	Monitoring – Langney Beach	6-6
6.7	Monitoring – Weather	6-8
6.7.1	NFFS Forecasts	6-9
6.7.2	Wind Speed and Wave Heights	6-10
6.7.3	Wave models	6-12
6.7.4	Water Level Monitoring	6-15
6.8	Monitoring – Lower Foreshore & Shingle Movement	6-16
6.9	Monitoring – Lower Foreshore & Sediment Loss	6-19
6.9.1	Natural Processes	6-20
6.9.2	Sovereign Harbour Dredging	6-21
6.10	Monitoring – PCDL Website Usage	6-12



- | | | |
|---|--|--|
| 7 | ABMS Profiles from June 2012 - 2013 | * Still to be provided by the Agency * |
| 8 | ABMS Volumes from June 2012 - 2013 | * Still to be provided by the Agency * |
| 9 | Forecast Surge & Wave Data from the Met Office | Data on CD ROM only |

Appendices

- | | | |
|---|---|---------------------|
| A | Shingle Gradings – Maintenance Recharge; September 2012 to January 2013 | |
| B | ABMS Photographic Record – June 2013 | |
| C | General Beach Photographic Record | Data on CD ROM only |
| D | Annual Company Accounts | |